

PREMIER CONSTRUCTION

THE RIGHT CHOICE
FOR QUALITY CONSTRUCTION



1 FRONT FRAME

3/4" thick kiln dried solid hardwood:
stiles 1-1/2" wide, mulls 3" wide, rails 1-3/4" wide

2 END PANELS

Nominal 1/2" (12mm) thick, wood based composite panels
dadoed to receive tops and bottoms. *Optional upgrade available*

3 TOP/BOTTOM PANELS

Nominal 1/2" (12mm) thick wood based composite panel
with maple grained or white laminate on exterior and interior
surfaces for wall cabinets and interior surface for base cabinets.

4 HANGING RAILS

Wall cabinets have nominal 1/2" (12mm) thick x 2-7/8" high multi-ply
hardwood plywood hanging rail running full cabinet width at top and
bottom. Base cabinets have nominal 1/2" (12mm) thick x 2-7/8" high
wood based composite panel hanging rail running full cabinet width at top.

5 BACK PANEL

Nominal 1/8" (3mm) thick hardboard with maple grained
or white interior surface.

6 SHELVES

Nominal 5/8" (15mm) thick wood based composite
panel with maple grained or white laminate on both
faces and matching edgeband on facing edge.
Shelves are adjustable in all standard wall and
base cabinets.

7 TOE KICK

Nominal 1/2" (12mm) thick unfinished wood based
composite panel captured between end panels.
Toe kick is 4" high and recessed 4".

8 BASE I-BEAM BRACES

Two 1/2" thick (12mm) x 2 7/8" wide composite
panel braces running full-depth front to back of
cabinet, recessed down 1" from top. All braces
are glued and stapled at top of cabinet to front frame and hang rail, and dadoed into end panel.

9 DRAWERS

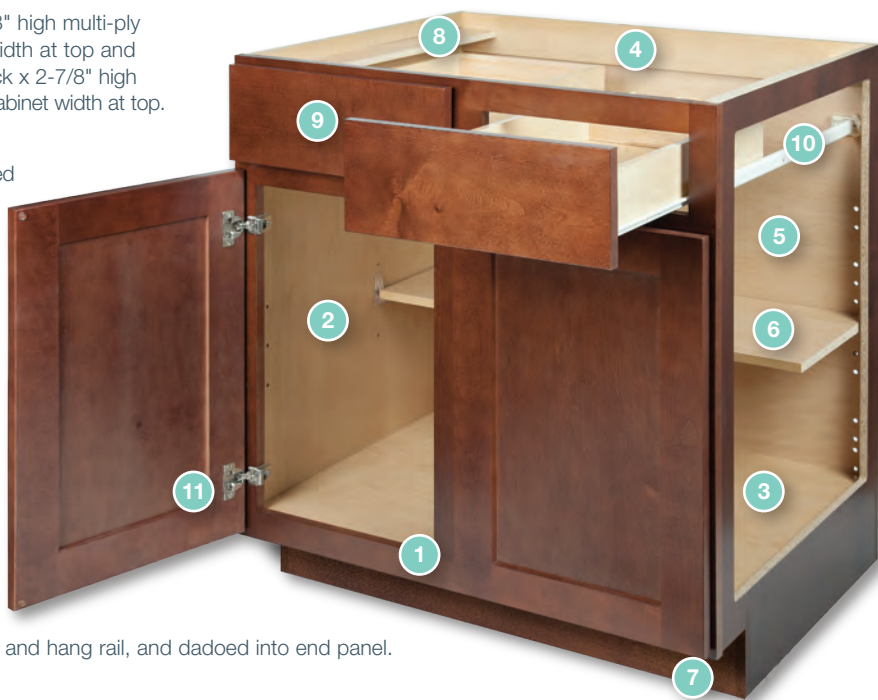
Nominal 1/2" (12mm) thick solid wood front, back, and sides with dovetail construction. Drawer bottoms are
nominal 1/4" (6mm) multi-ply hardwood inserted and stapled into dado in front, back, and sides. *Optional upgrade available*

10 DRAWER GUIDES

High-quality epoxy coated steel, Cushion-Tec™, side mounted guides, self-adjusting in mounting brackets. Built-in stop, self-closing
and stay-closed features with a 100 lb. rated load capacity. *Optional upgrade available*

11 HINGES

Heavy-duty, high-quality steel, concealed 6-way adjustable hinge with self-closing feature. *Optional upgrade available*



Kitchen Cabinet Manufacturers Association
Environmental Stewardship Program
All Products Impact the Environment
For ESP Program Criteria, Visit kcma.org

Advanta Cabinets is part of the Kitchen Cabinet Manufacturers Association (KCMA)
and the National Kitchen and Bath Association (NKBA). The Premier Construction Series
carries the ANSI/KCMA A161.1 quality assurance certification.

ADVANTA
CABINETS

AdvantaCabinets.com An **acpi** brand

Trademark owned by ACProducts, Inc. ©ACPI SSLITPREMIER 04/18 Printed in the United States of America
Advanta Cabinets products are certified by the Kitchen Cabinet Manufacturers Association.